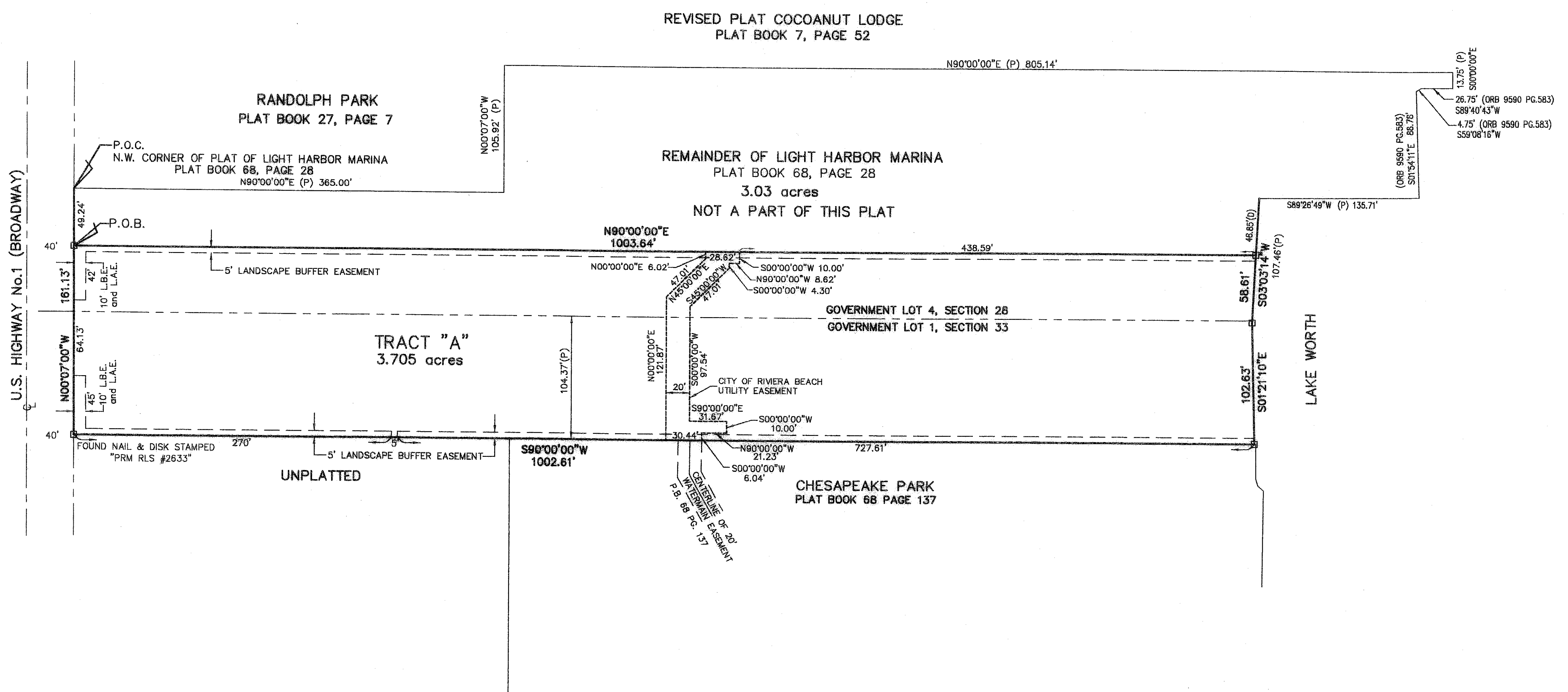
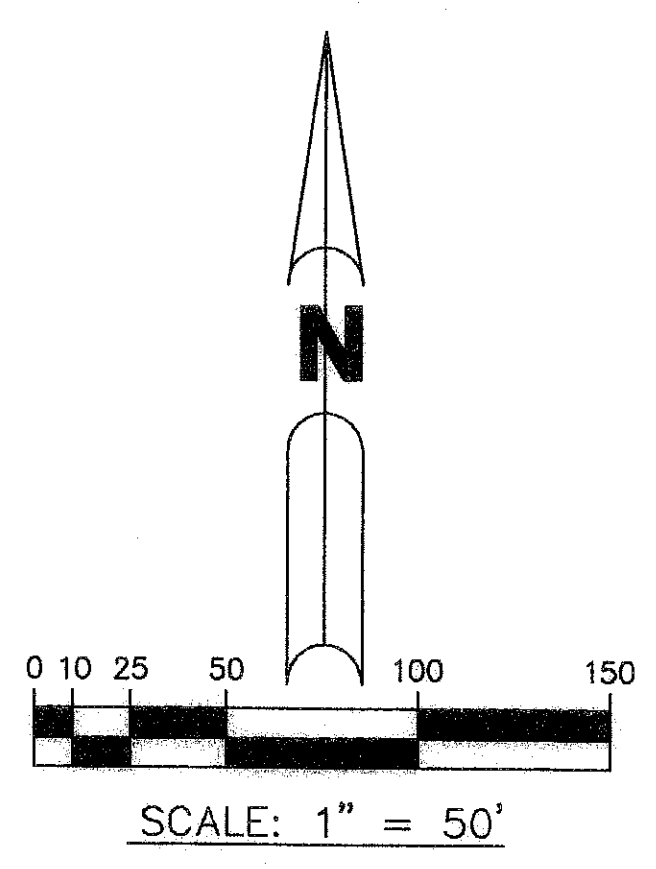


MOROSO PARK

LYING IN SECTIONS 28 and 33, TOWNSHIP 42 SOUTH, RANGE 43 EAST,
CITY OF RIVIERA BEACH, PALM BEACH COUNTY, FLORIDA, BEING A REPLAT OF
A PORTION OF LIGHT HARBOR MARINA, RECORDED IN PLAT BOOK 68, PAGE 28
OF THE PUBLIC RECORDS OF PALM BEACH COUNTY, FLORIDA

JUNE 2007

SHEET 2 OF 2



THIS INSTRUMENT WAS PREPARED BY
JOHN E. PHILLIPS III, P.S.M. 4826

BROWN & PHILLIPS, INC.
CERTIFICATE OF AUTHORIZATION # LB 6473
901 NORTHPOINT PKWY., SUITE 305
WEST PALM BEACH, FLORIDA 33407
561-615-3988, 615-3986 FAX

PROJ. No. 07-002
SCALE: 1"=50'
DATE: 6/14/07
SHEET 2 OF 2